



Reproductive & Sexual Health at DHEC

Collaboration, Action, and Impact

Katy Richardson, MD, MPH





- Definitions
- Data
- DHEC services & collaborations
 - Family planning
 - Sexually transmitted infections
- Discussion

Public Health: *The Institute of Medicine*

- Ensuring conditions in which people can be healthy
- Organizing community efforts aimed at the prevention of disease and the promotion of health
- Utilizing the science of public health = epidemiology
 - Tracking population health outcomes



Reproductive & Sexual Health

Good reproductive and sexual health is a state of complete physical, mental and social well-being in all matters relating to the reproductive system. It implies that people are able to have a satisfying and safe sex life, the capability to reproduce, and the freedom to decide if, when, and how often to do so.

-United Nations Population Fund

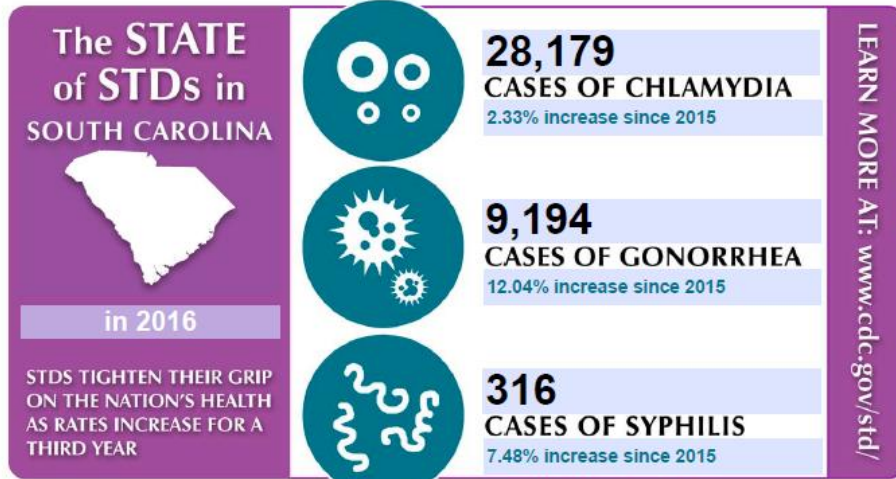


- Definitions
- Data
- DHEC services & collaborations
 - Family planning
 - Sexually transmitted infections
- Discussion



SC Family Planning Data




- The 15-19 year old birth rate fell by 67% from 1991-2016
- Reasons include education, accessibility of birth control, less teen sexual activity
- Tri-county ranks in the best quartile for the state
- Half of all pregnancies in SC are unintended
- 1 in 4 girls in SC will become pregnant before her 20th birthday
- 40% of SC high school students report ever having had sex
- 31% of these teens reported using a birth control method



Anyone who has sex is at risk, but some groups are more affected

- YOUNG PEOPLE AGED 15-24
- GAY & BISEXUAL MEN
- PREGNANT WOMEN

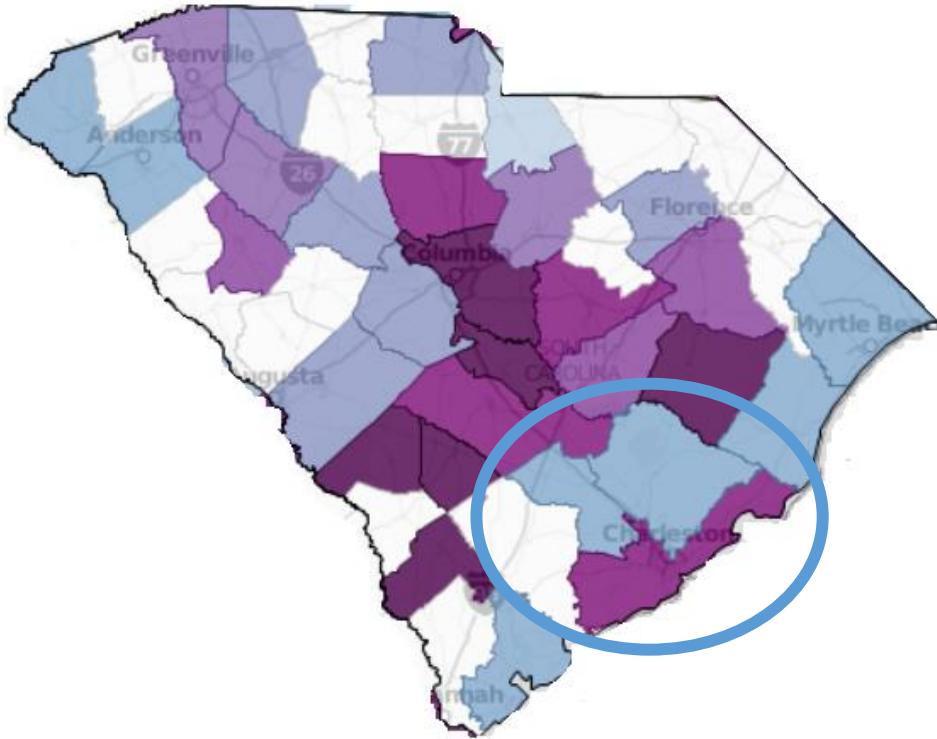
LEFT UNTREATED, STDs CAN CAUSE:

		
INCREASED RISK OF GIVING OR GETTING HIV	LONG-TERM PELVIC/ABDOMINAL PAIN	INABILITY TO GET PREGNANT OR PREGNANCY COMPLICATIONS

HELP INTERRUPT THE STEADY CLIMB IN STDs WITH THESE THREE STEPS:

<p>TALK </p> <p>Talk openly about STDs with your partners & healthcare providers.</p>	<p>TEST </p> <p>Get tested. It's the only way to know if you have an STD.</p>	<p>TREAT </p> <p>If you have an STD, work with your provider to get the right medicine.</p>
---	---	---



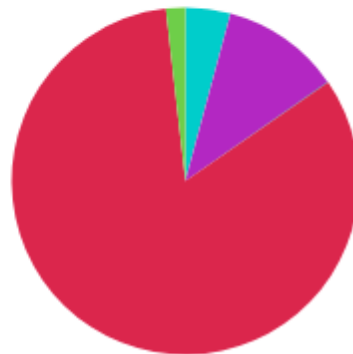


County	HIV Incidence	
	Rate (per 100,000)	Count
Charleston	34	82
Berkeley	13	21
Dorchester	12	16
Richland	42	117
South Carolina	21	717
United States	7.3	

Estimated Percent of New HIV Diagnoses, by Transmission Category, 2015

New Diagnoses

Male Transmission Categories



- Injection Drug Use (4.2%)
- Heterosexual Contact (11.1%)
- Other* (0.1%)
- Male-to-Male Sexual Contact (82.9%)
- Male-to-Male Sexual Contact & Injection Drug Use (1.8%)

Female Transmission Categories



- Injection Drug Use (7.1%)
- Heterosexual Contact (92.3%)
- Other* (0.0%)

*Includes hemophilia, blood transfusion, perinatal exposure, and risk factor not reported or not identified.



**Estimated HIV
Prevalence Rate
Ratios by
Race/Ethnicity,
2014**



The rate of black males living with an HIV diagnosis is 6.1 times that of white males.



The rate of Hispanic/Latino males living with an HIV diagnosis is 2.3 times that of white males.



The rate of black females living with an HIV diagnosis is 11.9 times that of white females.



The rate of Hispanic/Latina females living with an HIV diagnosis is 3.2 times that of white females.





- Definitions
- Data
- DHEC services & collaborations
 - Family planning
 - Sexually transmitted infections
- Discussion

Lowcountry Sites, DHEC



Allendale
Bamberg
Beaufort
Bluffton
Calhoun
Colleton
Goose Creek
Hampton
Holly Hill
Jasper



Johns Island
Moncks Corner
Mt Pleasant
MUSC
North Area
Northwoods
Orangeburg
Sea Island
Summerville



What does DHEC preventive health offer?

- Birth Control
 - Pills
 - Depo Provera
 - NuvaRings
 - Implants
 - IUD's
 - Condoms
 - Referrals for sterilization
 - Diaphragms
 - Plan B

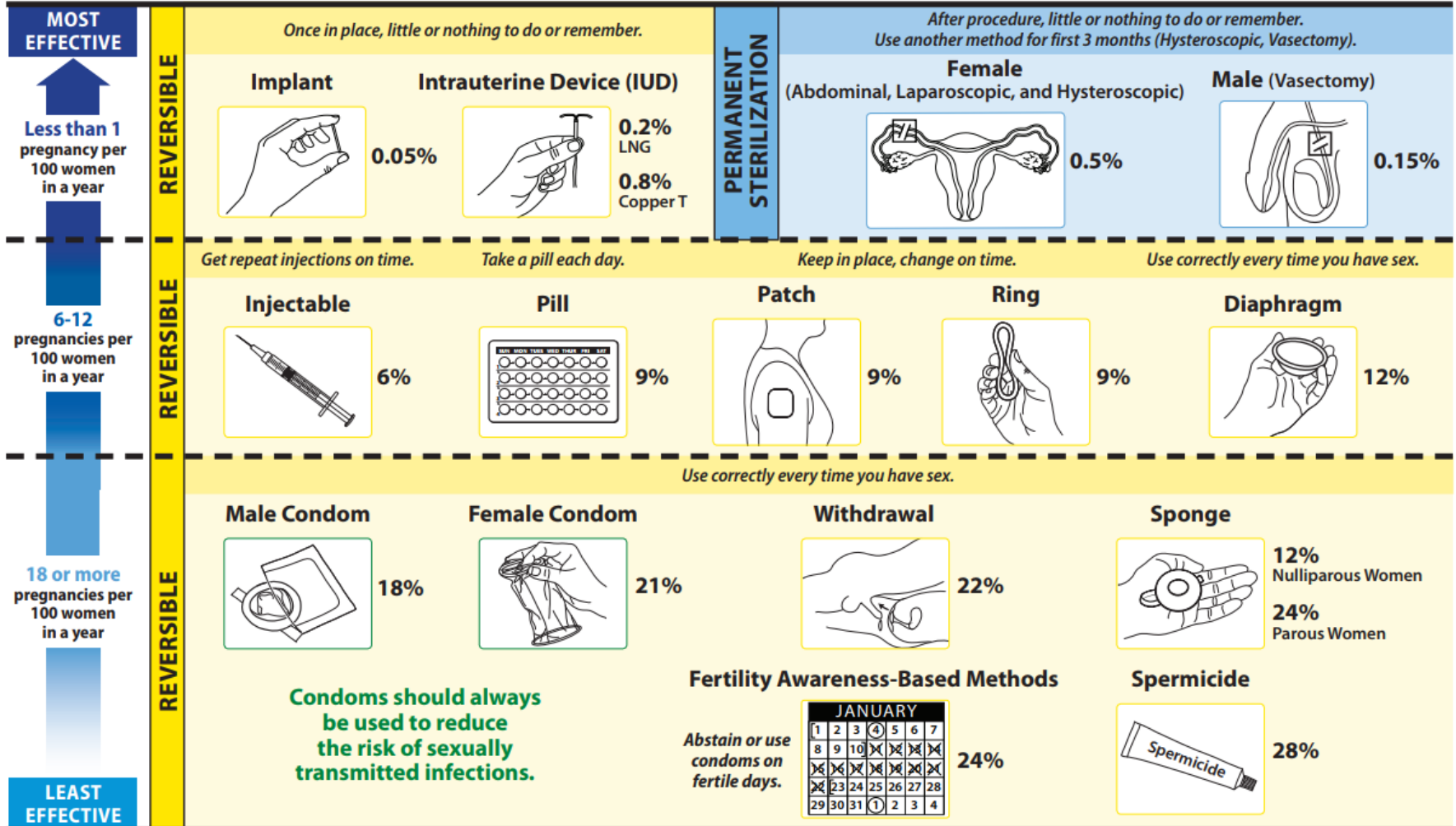
- Pregnancy Testing
- STI Testing and Treatments
- Annual Visits
 - Female Exams with breast exams and pap smears when indicated
 - Male Exams



- Definitions
- Data
- DHEC services & collaborations
 - Family planning
 - Sexually transmitted infections
- Discussion

EFFECTIVENESS OF FAMILY PLANNING METHODS*

*The percentages indicate the number out of every 100 women who experienced an unintended pregnancy within the first year of typical use of each contraceptive method.



Other Methods of Contraception: (1) Lactational Amenorrhea Method (LAM): is a highly effective, temporary method of contraception; and (2) Emergency Contraception: emergency contraceptive pills or a copper IUD after unprotected intercourse substantially reduces risk of pregnancy. Adapted from World Health Organization (WHO) Department of Reproductive Health and Research, Johns Hopkins Bloomberg School of Public Health/Center for Communication Programs (CCP). Knowledge for health project. Family planning: a global handbook for providers (2011 update). Baltimore, MD; Geneva, Switzerland: CCP and WHO; 2011; and Trussell J. Contraceptive failure in the United States. *Contraception* 2011;83:397-404.

Collaborations

- Choose Well
- Possibility for Title X sub-contracts
 - Contact Stephanie Derr for more info (derrsr@dhec.sc.gov)
- Referrals to/from local healthcare providers
- Student rotations for nurses, APRNs, & physicians (soon)
- MUSC Ob/Gyn faculty physicians supervise DHEC lowcountry APRNs



Choose Well

DHEC's Role

To serve as the **leading clinical partner** in this statewide initiative to reduce unintended pregnancies.



South Carolina Department of Health and Environmental Control
Healthy People. Healthy Communities.

**BETTER BIRTH CONTROL.
ZERO STRESS.**

8 METHODS, ALL FREE OR LOW-COST

NODRAMA.ORG





GETTING HERE WASN'T EASY. BEING HERE SHOULD BE.

Making time for yourself and this appointment probably took some doing. But you have the right to determine if and when you become pregnant. Generations of women have fought for that right. So we're honored to help you exercise it, and promise to keep things helpful and drama-free. Thank you for being here.



- Definitions
- Data
- DHEC services & collaborations
 - Family planning
 - Sexually transmitted infections
- Discussion

STI Testing, Treatments & Counseling

- **Test**

- All for chlamydia, gonorrhea, HIV, and syphilis
- Women for trichomoniasis, BV, & yeast
- Fast Track STI Testing
 - \$10 for urine tests for chlamydia and gonorrhea, and blood tests for syphilis and HIV

- **Treat**

- Chlamydia, gonorrhea, syphilis, trichomoniasis, and bacterial vaginosis

- **Refer** clients to outside providers for HIV care

Partner Services & Surveillance

- Disease Intervention Specialists (DIS) elicit partners from newly diagnosed HIV and syphilis clients and confidentially notify them of the need for testing
- DIS also collect information for STI and HIV surveillance
- Yearly surveillance reports available on DHEC website

Collaborations

- SHAPE Initiative
- Outreach testing events
- Educational outreach
- Funding for CBOs
- Student rotations/ internships in nursing, public health, social work, medicine
- Work with providers for STI treatment, consultation



Charleston Sexual Health Awareness, (STI) Prevention & Education Initiative

Mission: To reduce STIs by providing access to education, treatment, and prevention resources for people of all ages in the greater Charleston community

Vision: Empower individuals to make healthy decisions regarding their sexual health for a community free of STIs

SHAPE Workgroups

- Clinical and Surveillance
 - Promotes education and training for health care providers, encourages testing, and obtains surveillance data to support SHAPE activities
- Communication & Outreach
 - Raises community awareness through promoting STI education and outreach, and engages community stakeholders

First general meeting: September 2015

First workgroup meeting: November 2015



SHAPE Participants

- AccessHealth Tri-County Network
- College of Charleston
- EMPOWERRR
- Franklin C. Fetter Health Care
- Joint Base Charleston
- Low Country AIDS Services
- Medical University of South Carolina
- Roper St Francis Ryan White Wellness Center
- South Carolina Department of Health and Environmental Control (DHEC)
- South Carolina Department of Mental Health
- Walgreens
- YWCA



- Definitions
- Data
- DHEC services & collaborations
 - Family planning
 - Sexually transmitted infections
- Discussion



Discussion Questions

How do these issues impact the work you do and the clients you see?

How can we collaborate to increase our impact on reproductive and sexual health issues?



Credits

Stephanie Derr

Ryan Gedney

Stephanie Isaacs

April McDonald

Eric Meissner

Laura Davis

Melanie Nichols

Lillian Peake

Riggs Partners

David Thomas

Gwen Lazenby



Contact Us
www.scdhec.gov
(803) 898-DHEC (3432)

Stay Connected

